



**GREATER  
DENVER  
TRANSIT**

[www.greaterdenvertransit.com](http://www.greaterdenvertransit.com)

## Agenda

6:00pm	Doors Open
6:30pm	Meeting Start
6:32pm	The News
6:50pm	Events
7:00pm	Projects
7:15pm	A Conversation with Michael Dougherty
8:00pm	Meeting Ends
8:15pm	Terminal Bar Drinks

# Monthly Meeting

**September 18th, 2025**



Email List





# The News



# GDT Leadership Team Expands



To prepare the org to take the big step toward 501(c)(4)...



Cody Bryan



Saigopal Rangaraj

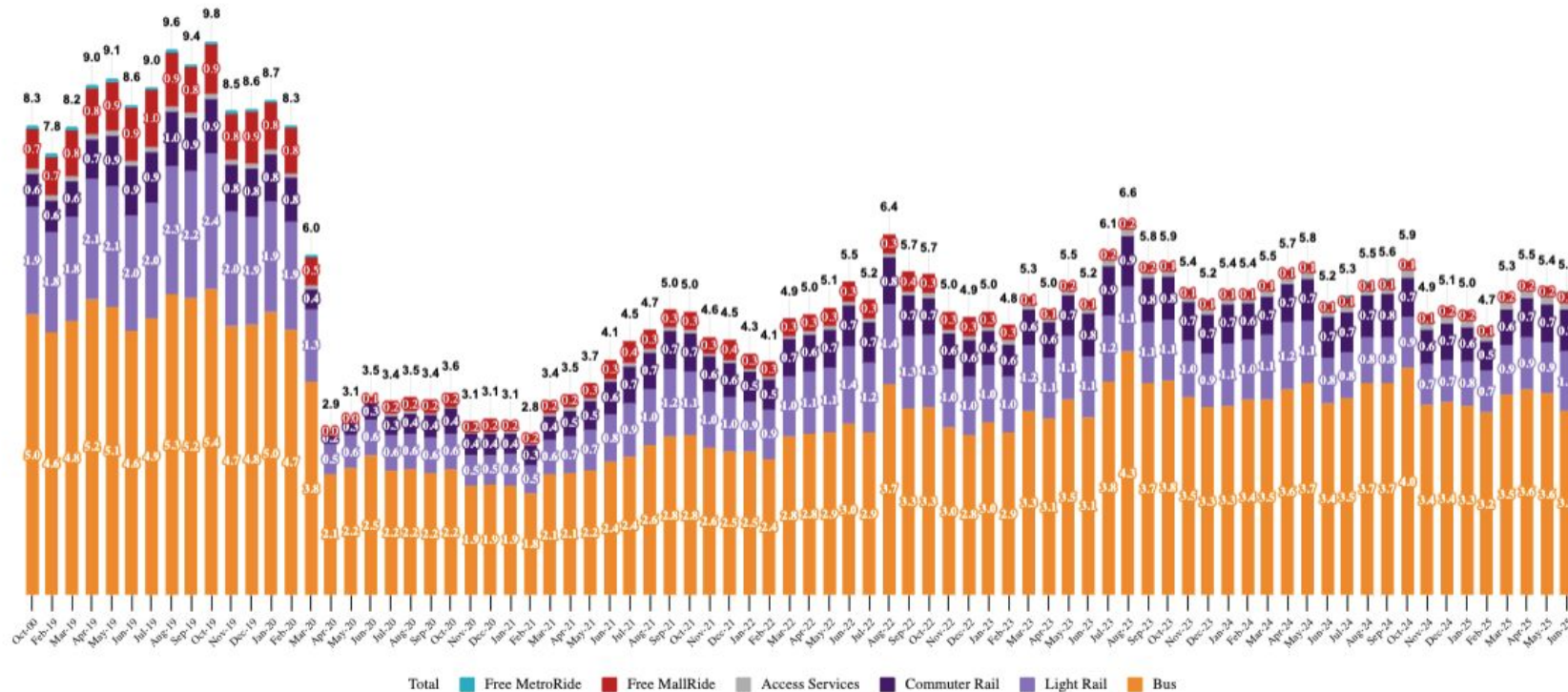




# Ridership Analysis - June 2025



RTD Ridership by Mode (millions of boardings)



YoY % Growth\*

Bus -8%

Light Rail +25%

Heavy Rail -2%

Total -1%

\* Growth rates adjusted for equalized work week days on a year-over-year basis

Jun 2019  
8.6m riders

Jun 2021  
4.1m riders

Jun 2025  
5.3m riders



# RTD Operator Shortage - June 2025



**Bus Methodology Update!**  
**62 Trainees and 37 Retirees**  
**carved out**

Headcount				
Bus Operators	Budgeted	Current	Vacancies	Vacancy Ratio
Part-Time	102	37	65	63.72%
Full-Time	900	816	84	9.33%
Retirees	—	37	—	—
In Service Operator Totals	1002	890	*149	*14.88%
Trainees	—	62	—	—

• Includes Full-Time and Part Time only.

**Bus**  
**149 Vacancies**  
853 vs. 1,002 Budget

**Light Rail**  
**35 Vacancies**  
182 vs. 217 Budget

**Bus & Light Rail**  
**184 Vacancies**  
1,035 vs. 1,219 Budget

**YoY Net Increase in Hiring\***

**Bus -46**  
**Light Rail +13**  
**Total -33**

\*YoY Increase (decrease) includes Full Time + Part Time operators presented net of attrition (voluntary & involuntary)





# RTD Paratransit 'Peer Review'



# RTD Paratransit Services

---

---



**To use RTD's paratransit services,  
an individual must:**

**be unable to get to and from a bus stop or on  
and off a lift-equipped fixed-route bus by  
themselves**

**have a disability that prohibits them from  
completing fixed-route bus independently**

**live in the RTD District and within  
3/4 mile of a fixed route bus or rail stop**





# Access-a-Ride



One-Way Ticket

**\$4.50**

one-way

Airport

**\$19**

one-way to DEN

Ticket Book - 6, One-Way Passes

**\$27.00**

**LiVE Fare\***

One-Way Ticket

**\$2.25**

one-way

Airport

**\$9.50**

one-way to or from DEN

Ticket Book - 6, One-Way Tickets

**\$13.50**

**Fully ADA compliant  
door-to-door van service**

**Trips must be scheduled  
between 1-7 days in advance**

**30 minute pick up window,  
shared service**



# Access-on-Demand



“Curb-to-curb” service aimed at disabled individuals who can travel in a regular car

Choice of **4 providers** for service, 60 trips / mth

RTD subsidizes the first \$25 of the fare  
- then provider’s regular fares apply

Now described as a “**supplemental**”  
and a “**premium**” service

Uber

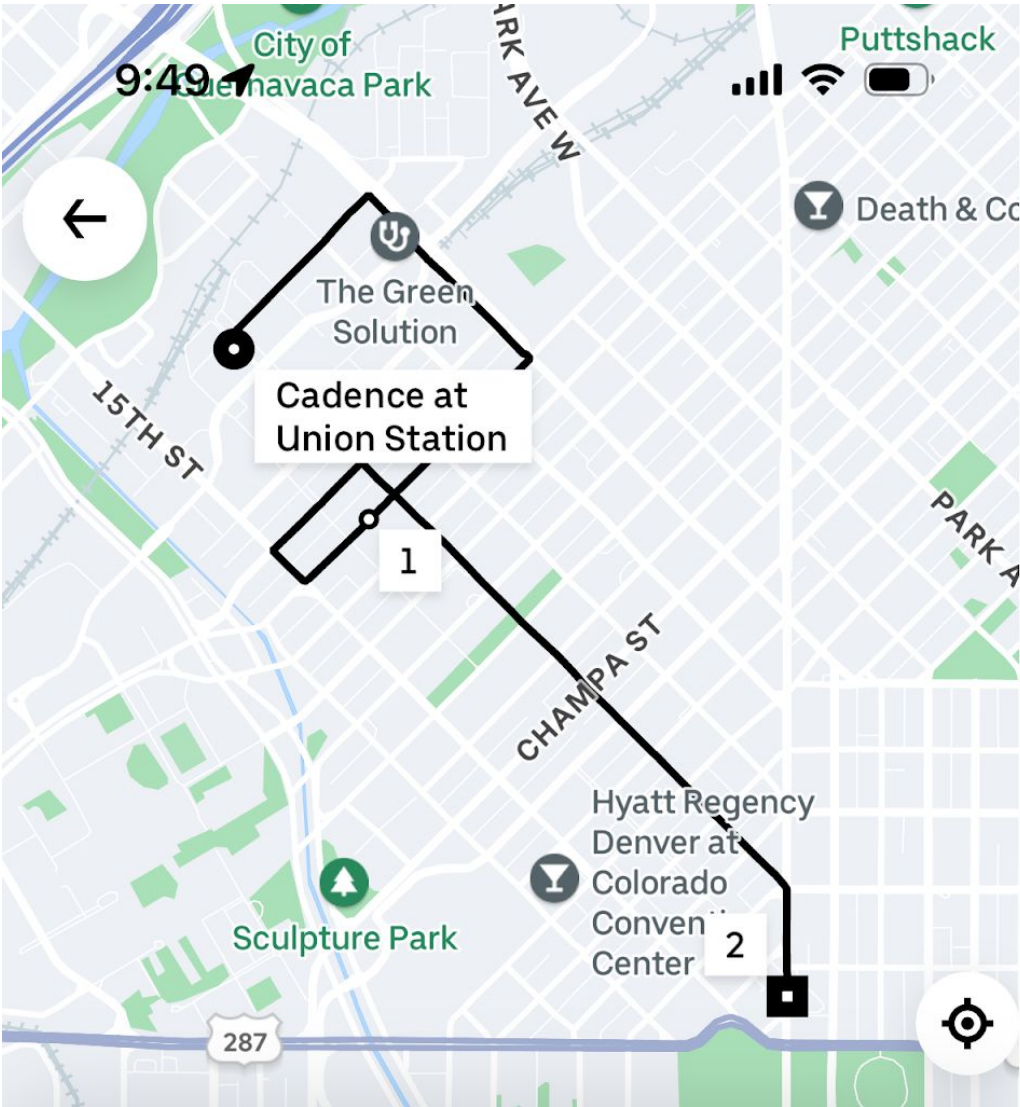
lyft

**zTrip**<sup>®</sup>  
The new face of taxi.™

**METRO**  
**TAXI**



# The Banned “Multi-stop” Function



### Add stops

Pickup now

For me

Cadence at Union Station

1660 Blake St

Civic Center RTD Bus Station

Add a stop

Done





# The Battle of Access-on-Demand



## September 9, 2025, Recommendation from Director Harwick, Chair, Operations, Safety, and Security

### Program Parameters

Standard fare	\$6.50 upfront fare/\$3.25 LiVE fare
Trip subsidy	\$20/trip
Service area	All locations within current RTD service area
Service window	Current AaR service hours
Trip cap	60 trips/month
Multi-stop trips	Customers may schedule multi-stop trips with a maximum of two destinations per origin (e.g., from home to daycare location to work location), utilizing providers that allow multi-stop functionality, with the initial destination not counting toward the 60 trip/month cap or requiring an associated base fare

(Note: A multi-stop trip is defined as a trip with an origin-destination-destination.)

Assumptions	Projections assume a reduced increase in new monthly customers of 2.5%, and an average of 18 trips per customer per month
-------------	---

### Annual Program Costs

Trip subsidy after fare	\$15,243,301
WAV cost	\$14,788,496
<b>Total cost</b>	<b>\$30,031,797</b>

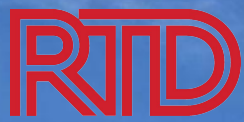
Staff targeting reducing AoD annual costs from \$15M to \$10M by way of introducing fares and reducing service hours from 24/7

AoD changes sent back to OSS Committee for September meeting  
- who then recommended a \$6.50 fare!

GDT continues to question why only AoD was targeted in a 'Paratransit Peer Review'







# Accountability Committee



## **Governor Appointees**

**Harold Dominguez, City Manager of Longmont**

**Alexis Senger of Denver, University of Colorado System Consultant**

**Jackie Millet, Mayor of Lone Tree**

**Maria Garcia Berry, fmr. RTD Board Member, FasTracks Ballot Measure Lead, Public Affairs Expert**

**Matt Larsen, Board Member for RTD District E**

**James Flattum, Co-founder of Greater Denver Transit**

## **Other Appointees**

**Jaime Lewis, CCDC, former RTD BoD Member**

**Lance Longenbohn, ATU 1001 President**

**Matthew Groves, Colorado Automobile Dealers Association**

**Kip Kolkmeier, Jefferson County Board of Adjustment and Volunteer Court Mediator**

**Andrew Iltis, Downtown Denver Partnership**

**Miller Hudson, set the original voter-elected Board**

**Renee Chacon - Commerce City Councilwoman**

**Tobin Snook - Youth Appointee**

**Julien Bouquet, RTD Board Chair (non-voting)**



# Boulder Junction Reopens



**Boulder Junction Station**  
reopened on Sun Aug 31st

Currently 2 routes use the  
building; **AB2** and **FF4**

Buses to Downtown Boulder  
are up to 2 blocks walk away!





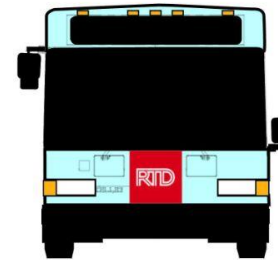
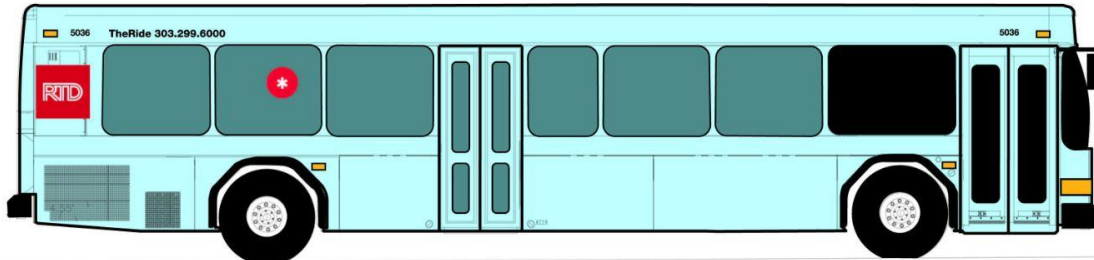
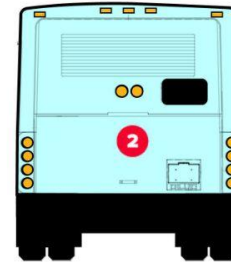
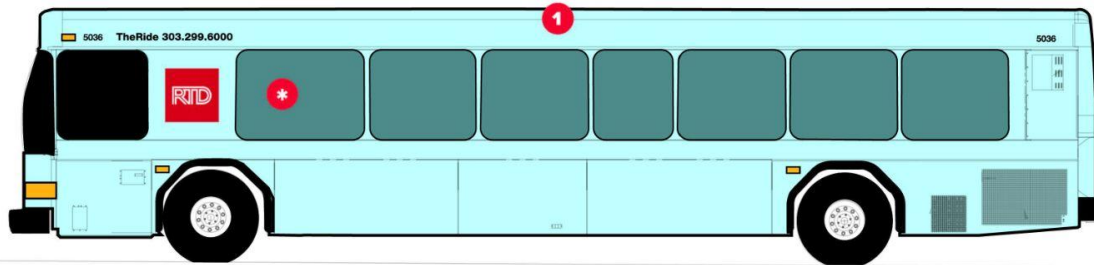
# New Advertising Contract Issues



40' LF GILLIG  
FULL WRAP

#### Specifications

- 0% coverage on operator window-streetside
- 0% coverage on front door-curb side
- 0% coverage on first curbside window
- 0% coverage on rear door upper windows
- Up to, but not to exceed 50% coverage of total remaining square footage on all other windows
- NOT TO SCALE



Request for Proposals  
issued Sep 2nd.  
All documents on OpenGov  
website.

After front windows and  
doors, contract still says  
up to 50% of remaining  
windows may be wrapped!

Director Paglieri is leading  
an effort for a Board  
resolution to ban window  
wraps completely!

1 FULL SIDE: 108"x 485.06" 2 BACK: 95"x 108" \* Up to, but not to exceed 50% coverage of total remaining square footage on all other windows

WRAP AREA





# Unacceptable RTD Response to Break-Ins



What's  
this???

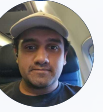
In one day, over two dozen  
smash & grabs were recorded  
at RTD's 40th & Colorado  
Station Park-n-Ride

RTD issued a statement to the  
media about having no  
cameras that was **completely  
unacceptable**

RTD said they **“don't have the  
power infrastructure”** at 40th  
& Colorado



# Mile High Stadium to Burnham Yards



Northbound

It's official, expecting first renderings and images in the next few months

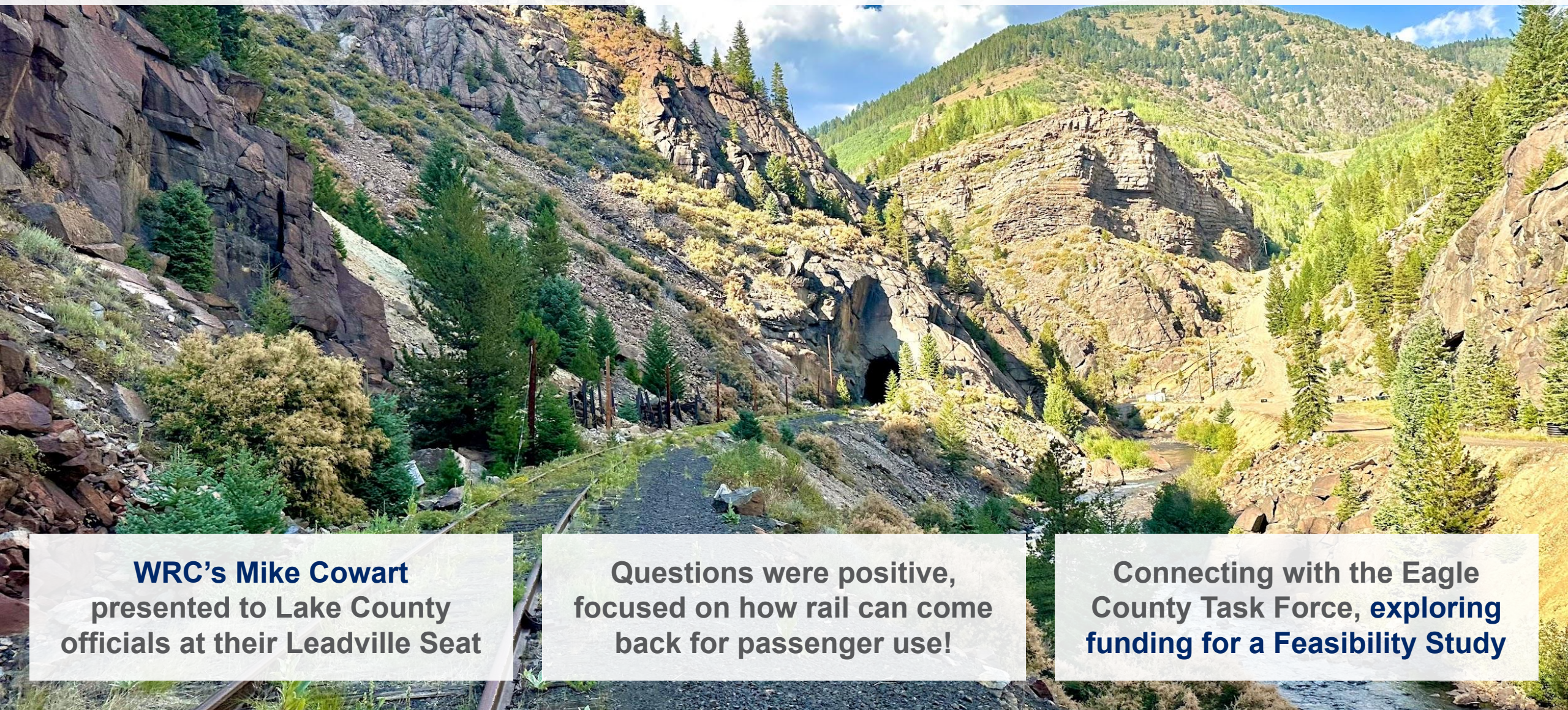
Politics involved, could move very fast. Watch for the transit!

GDT working on long-term rail vision for the site and Greater Denver!





# Western Rail Coalition Update



**WRC's Mike Cowart**  
presented to Lake County  
officials at their Leadville Seat

Questions were positive,  
focused on how rail can come  
back for passenger use!

Connecting with the Eagle  
County Task Force, **exploring  
funding for a Feasibility Study**





# Grand Junction Union Depot Support



**GRAND JUNCTION CALLS FOR AID**

**AND GDT WILL ANSWER**

imgflip.com

**WRC's Michael Nuttall**  
is collecting support letters  
for critical grant funding

Friends of GJ Union Depot  
are asking rail-friendly  
organizations across CO/UT

Fundraising to reopen as a  
focal point for non-auto  
mobility on the Western Slope



# Last Night on the L Line



RTD is once again shutting down **“Denver’s Streetcar”** the **L** line until **Nov 27th**

On Sat Aug 30th, a GDT crew met for one last ride of the summer.

Thanks to RTD light rail division and operator Sergio Chavez, badge #26377!





# Bus Rodeo



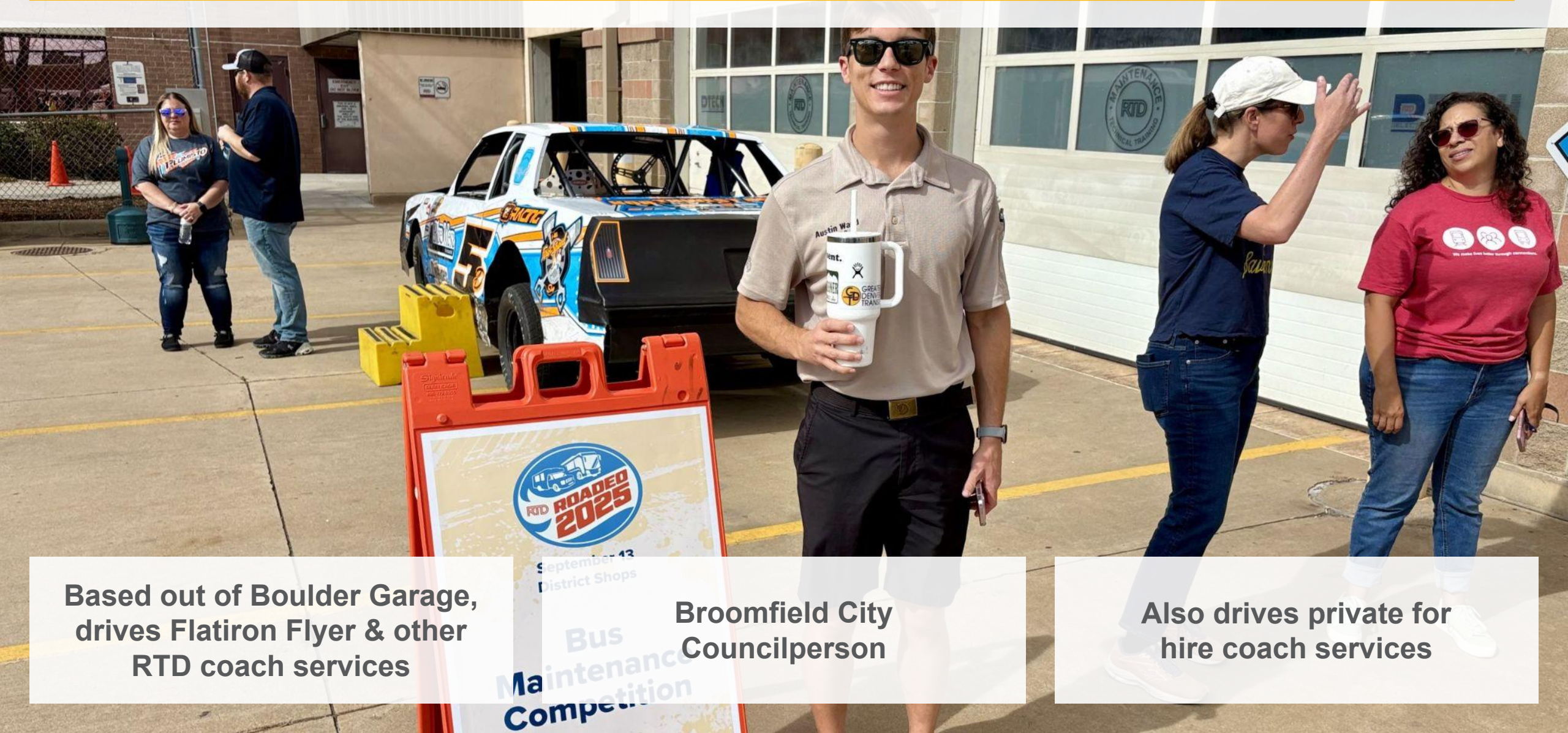
**Welcome to  
the 2025  
Bus Roadeo!**

RTD held its annual bus rodeo on Sat Sep 13th at the District Shops





# Bus Rodeo - Meet Austin Ward



Based out of Boulder Garage,  
drives Flatiron Flyer & other  
RTD coach services

Broomfield City  
Councilperson

Also drives private for  
hire coach services



# RTD Bus Rodeo - Uniform Check







# Bus Rodeo - Defects Inspection



Five defects on this bus - operators have 5 minutes to find them!



# RTD Bus Rodeo - Course



**2 courses, one for buses and one for Paratransit / FlexRide set up**



**Operators are timed and earn / lose points depending on how accurately they drive**



**Final task is an “accuracy stop” from 20mph**



# RTD Bus Rodeo - Awards



**2nd place for Austin. Congratulations!**





# A Very Happy Birthday from GDT...

---

---



**Matthew Larsen**

**RTD District E  
Board Director**







# Events





# Board of Directors Meeting



**Next board meeting  
5:30pm Tue Sep 30th  
1660 Blake St, Denver**

**Please come and give  
in-person public comment  
Meet outside at 5:15pm**

**Please speak about the  
Access-on-Demand  
Program Modifications**



# Monthly Meetings



**6pm on 3rd Thursday  
of the month**

**Drinks at  
Terminal Bar after!**

**Next meeting  
6pm Thu Oct 16th**



# More Meetings...



**FRONT RANGE  
PASSENGER RAIL**

Front Range Passenger Rail  
Board of Directors Meeting  
**9am Fri Sep 26th**



INC Transportation  
Committee Meeting  
**6pm Thu Nov 13th**

**DENVER  
CITY COUNCIL**



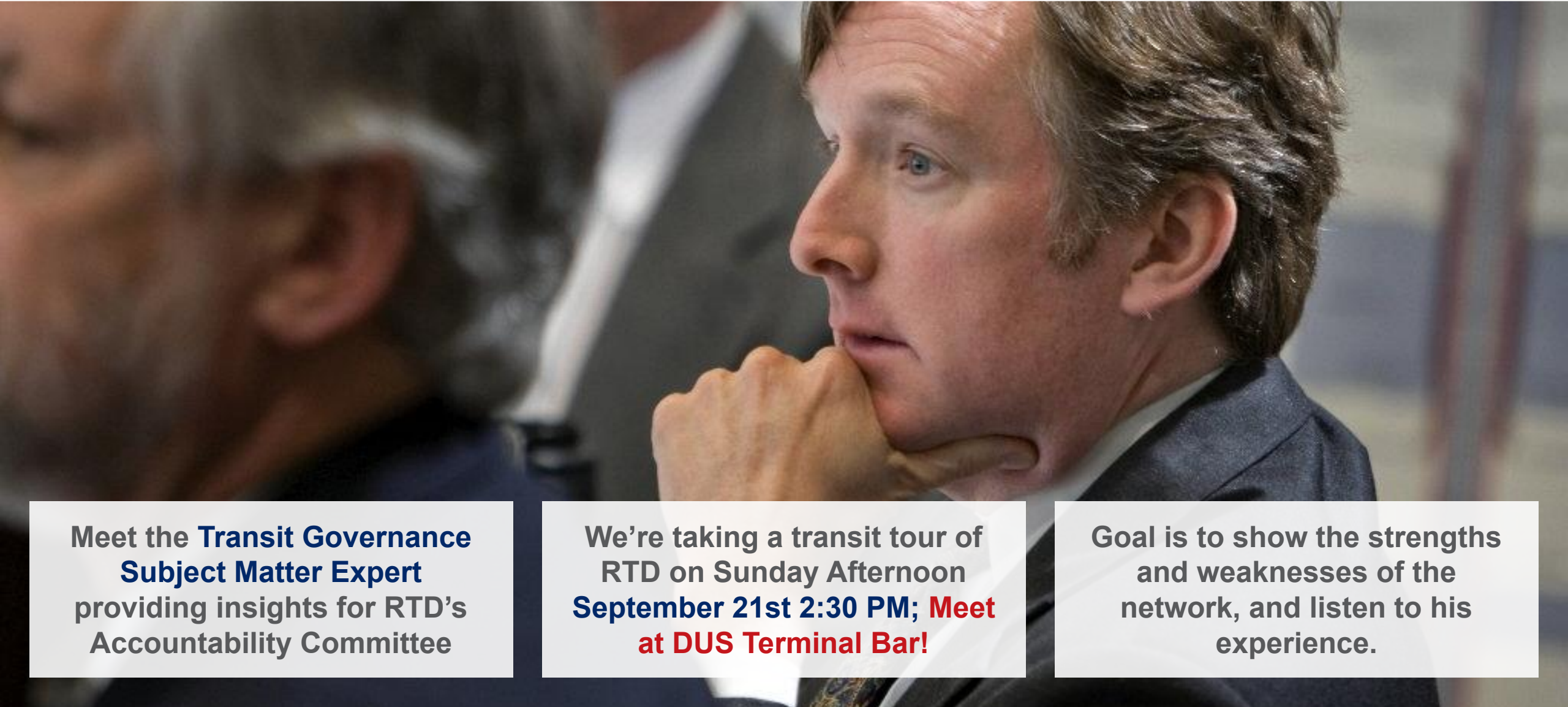
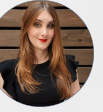
Register for 30 minute public  
comment session  
**5pm Every Monday**



# Tour RTD with David Bragdon

---

---



Meet the **Transit Governance  
Subject Matter Expert**  
providing insights for RTD's  
Accountability Committee

We're taking a transit tour of  
RTD on Sunday Afternoon  
**September 21st 2:30 PM; Meet  
at DUS Terminal Bar!**

Goal is to show the strengths  
and weaknesses of the  
network, and listen to his  
experience.



# Grand Junction Trip



2 05 PM MST	1224	Lv	Glenwood Springs, Colo.	Lv	1 38 PM
2 35 " "	1251	Lv	Rifle, Colo.	Lv	1 0
3 50 " "	1313	Ar	Grand Junction, Colo.	Lv	11
4 00 " "	1313	Lv	Grand Junction, Colo.	Ar	11
	1347		Ruby Canyon—Colo.-Utah State Line		
	1353		At Westwater, Utah, last stop on Colorado River		
6 20 PM MST	1442	Lv	Thompson	Lv	11 4
7 08 PM MST	1490	Lv	Helper, Utah	Lv	8
	1515		Soldier Summit—Wasatch Range		
8 50 PM MST	1565	Lv	Provo, Utah	Lv	6
	1609	Ar	SALT LAKE CITY, UTAH	Lv	5
			Western Pacific Railroad		
	1609	Lv	SALT LAKE CITY, UTAH	Ar	
	1631	Ar	Wendover, Utah	Lv	
		Ar	Elko, Nev.	Lv	
			Winnemucca, Nev.	Lv	
			Laughlin, Nev.	Lv	
			Indio, Calif.	Lv	
			Barstow, Calif.	Lv	
			Red Canyon—116 miles through Sierra Nevada		



Westbound on Bustang,  
Eastbound on Amtrak's  
California Zephyr

Meet up with **Noah Sponable**  
& **Friends of GJ Union Depot**,  
see the urban renaissance!

2 days **Saturday October 25th**  
- **Sunday October 26th** (put in  
PTO now)!





***venmo***

GDT Members  
Suggested Donation  
**\$3 / Slice**





# Michael Dougherty

**A Conversation about Transit and the Law**





# Projects



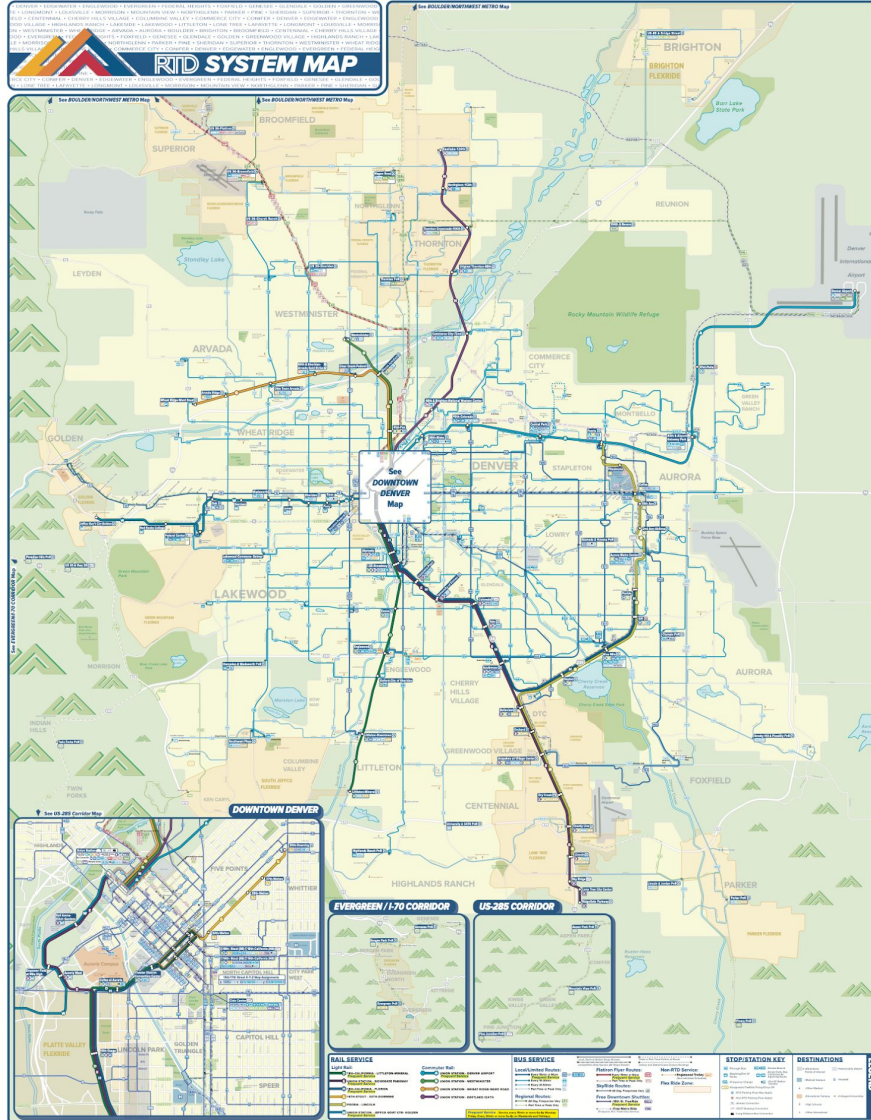




# The Elusive RTD System Map ft. Buses



So far, it has been an insurmountable challenge for RTD to produce a system-wide map.



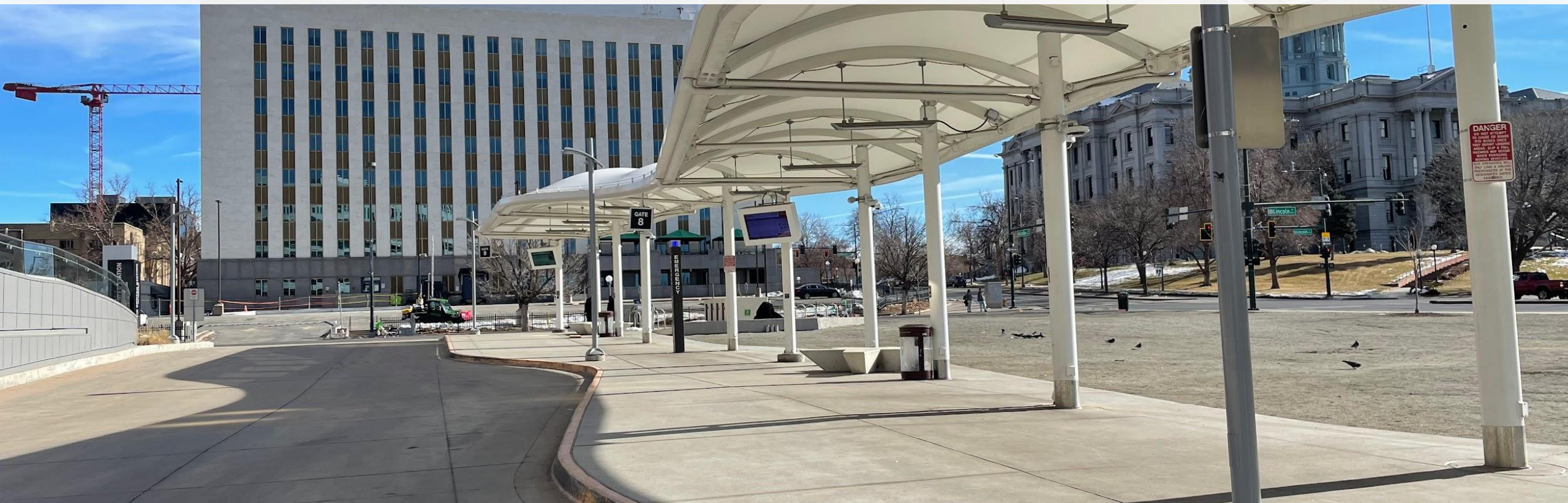
90% Complete!



Now Darrel Abruzzo has taken on the challenge, and at 90% complete, the product is breathtaking.



# Downtown Bus Plan



**Downtown Bus Plan is being discussed within RTD.**

**Surprising positivity some from several members of staff, chief concern is around Civic Center Station (CCS)**

**CCS is “at capacity” due to layover space, not gates. Time to develop the Gravel Pit?**



# RTD Metro Area Bus Plan



New route geometry review continues to advance toward the outer metro

Goal is still to wrap up the project by end of year

Aim to start preliminary conversations with stakeholders next month



# L Line on Welton Street



**Presentation in final stages of development**

**Input sought from GDT members**

**Downtown Area Plan appears to propose a bus only transitway for Welton St**



# Greater Denver Moves: 2050 Vision



**Neighborhood mega-developments are coming that will impact transit, and several are picking up speed**

**Mile High Stadium moving to Burnham, Ball Arena Parking Lot Redevelopment starting, extension of DT w/ River Mile**

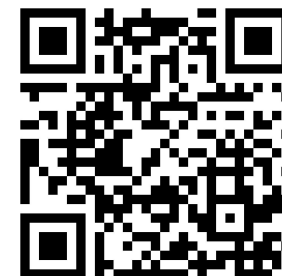
**Time for GDT to develop the long-term rail vision to complement our well-developed bus vision.**





**GREATER  
DENVER  
TRANSIT**

[www.greaterdenvertransit.com](http://www.greaterdenvertransit.com)



**Email List**

**CIVIC CENTER STATION**



**Thank You!**

**Terminal Bar drinks are next**